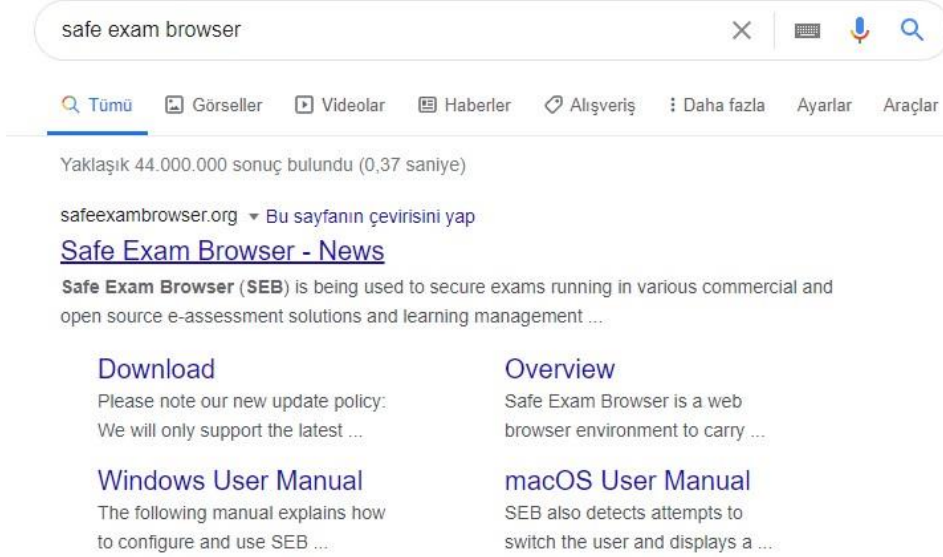


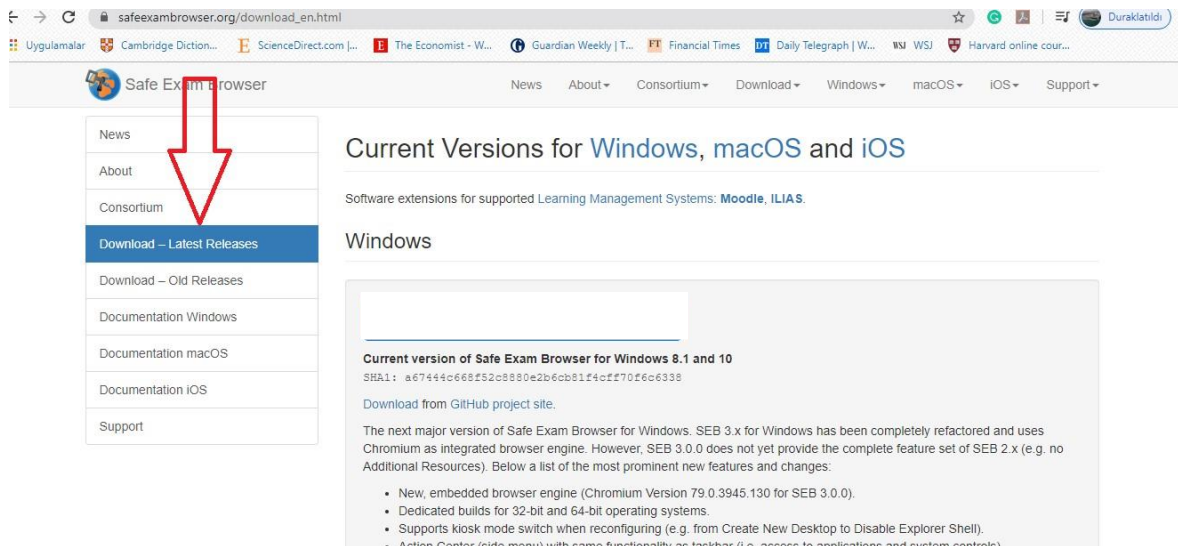
## INSTALLING SAFE EXAM BROWSER (SEB) FOR WINDOWS

SEB is a web browser that prevents users from opening new tabs on their computers or visiting new web pages during online exams, rather than those relevant to the exam. To be able to take the English Proficiency Exam (EPE), you must install SEB on the computer that you will use to take the exam. Please follow the steps below to complete the set-up of SEB:

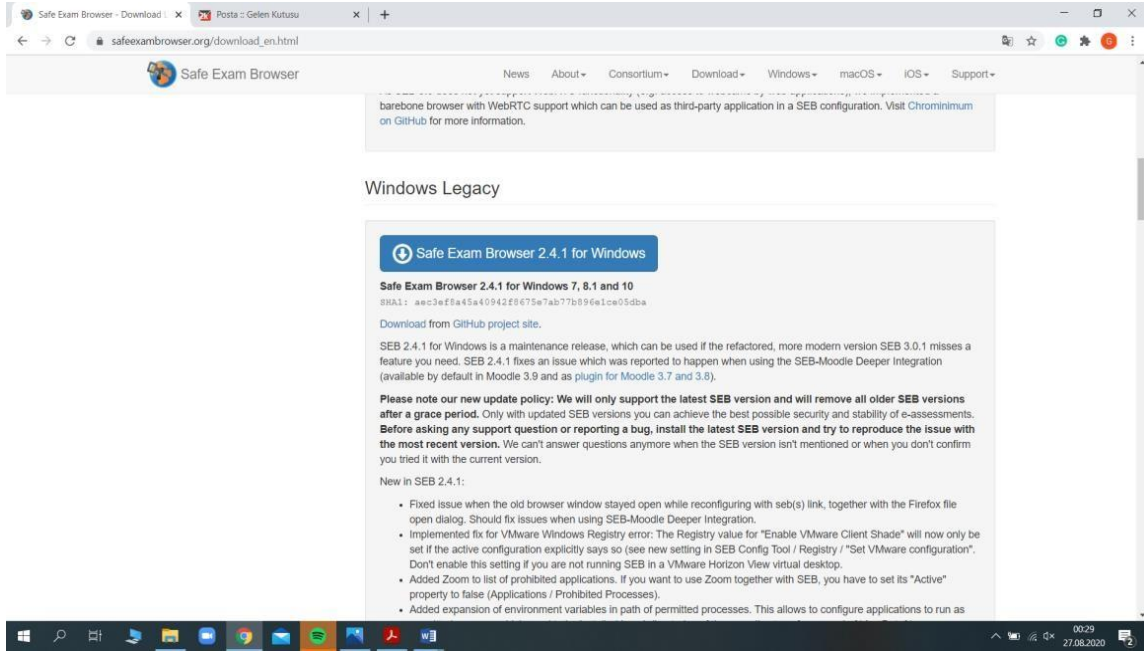
1. Type "safe exam browser" into your search engine.
2. Go to safexambrowser.org.



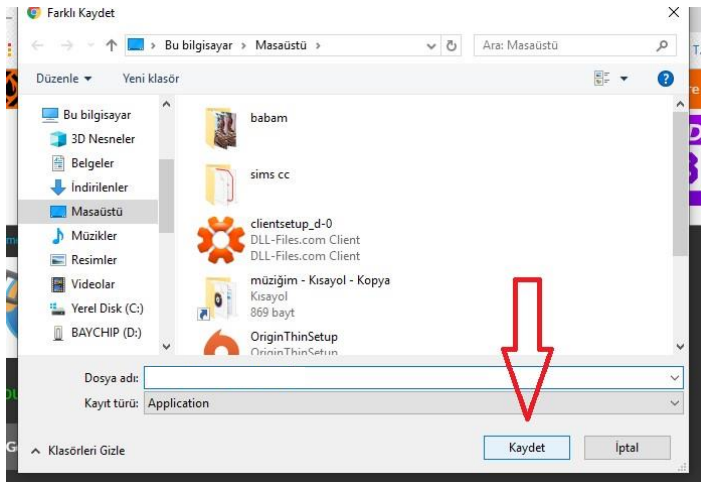
3. Click the Download icon.



4. Download Safe Exam Browser 2.4.1 on the page that will appear.  
(Don't download Safe Exam Browser 3.)



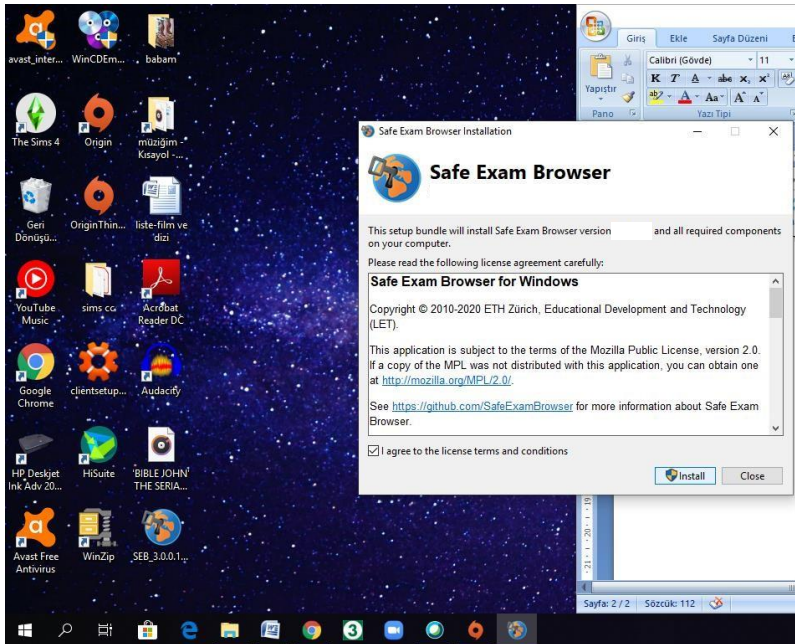
5. You will see a screen similar to the one below. Click on the Save button to start downloading.



6. Wait until the download is complete.

Double-click the exe file at the bottom left corner of the screen.

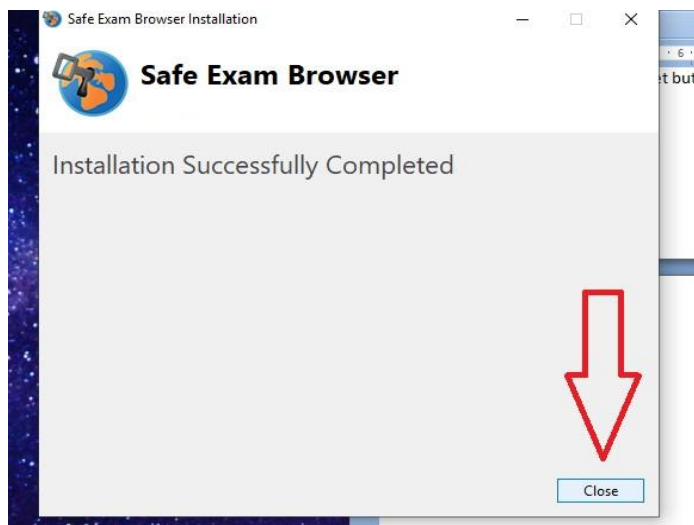
You will see the screen below:



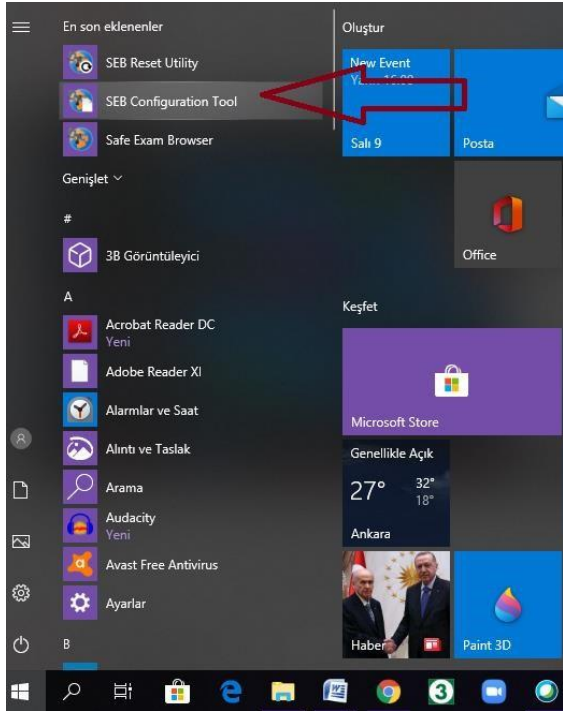
7. Tick the box placed before the statement that starts I agree to the licence terms... and click the Install button.

8. Click the Yes button on the screen that will appear.

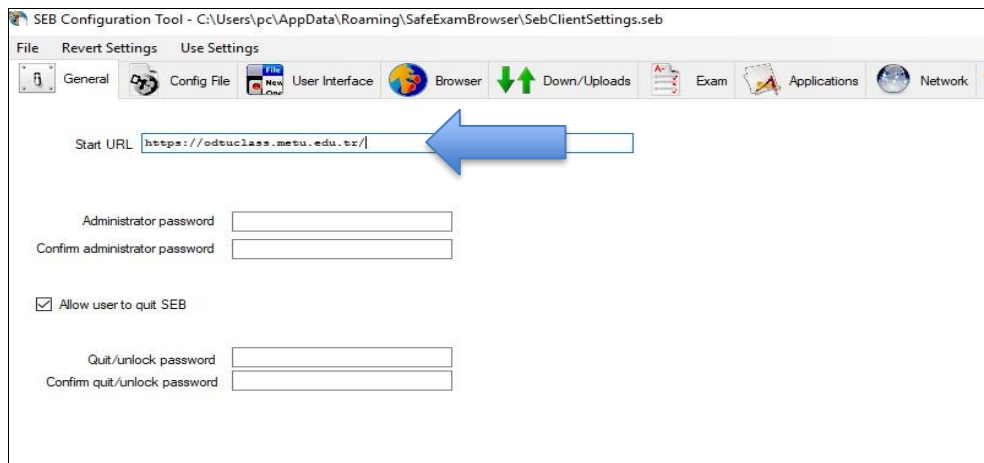
9. When the download is complete, click the Close button on the screen that will appear.



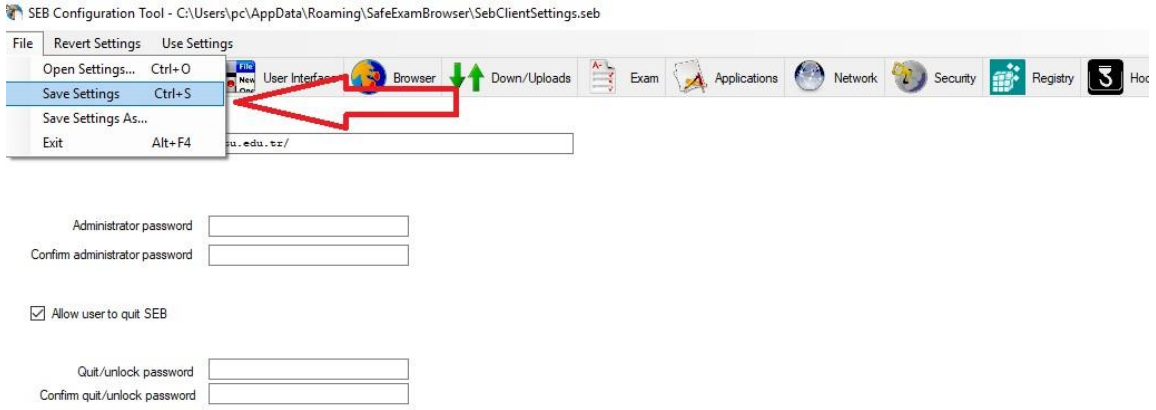
10. Once these steps are completed, go to the menu of your device and open the SEB Configuration Tool.



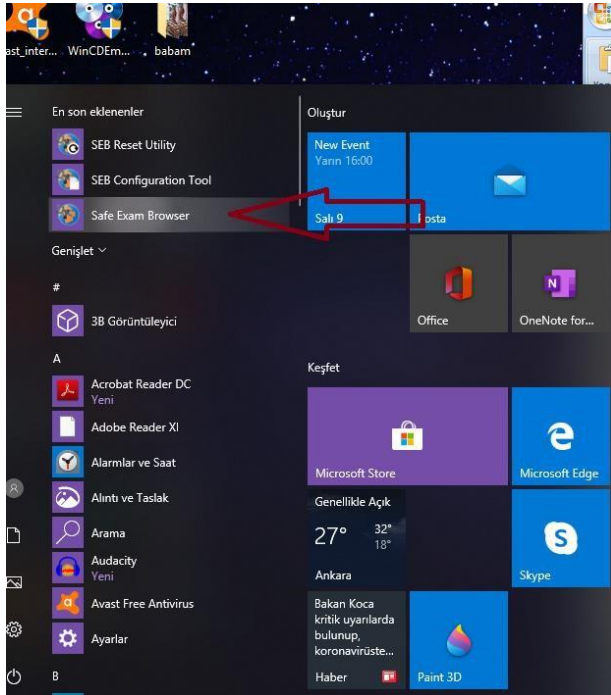
11. Check the exam announcement at <http://epe.metu.edu.tr> for the “Start URL” address and type it into the section in the small window that will appear.



12. To save this change, click File in the top menu and then click Save Settings.

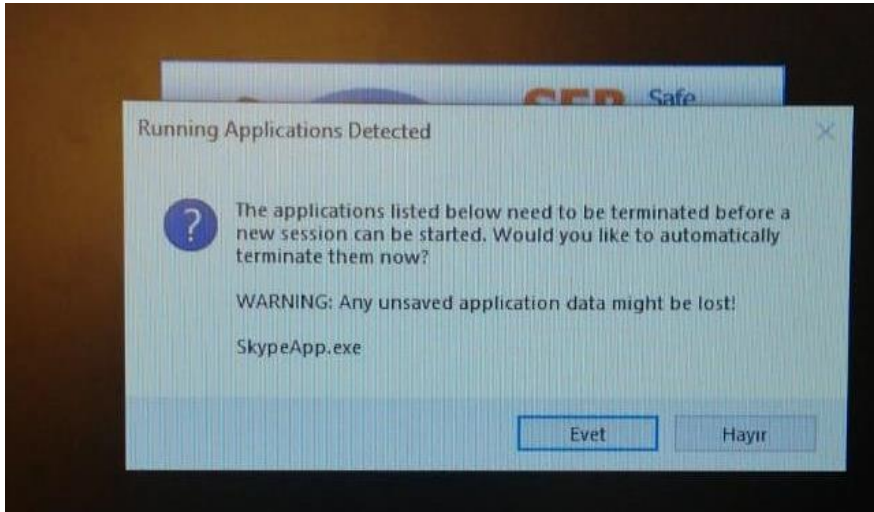


13. To take your exam, now open Safe Exam Browser using your computer's menu.

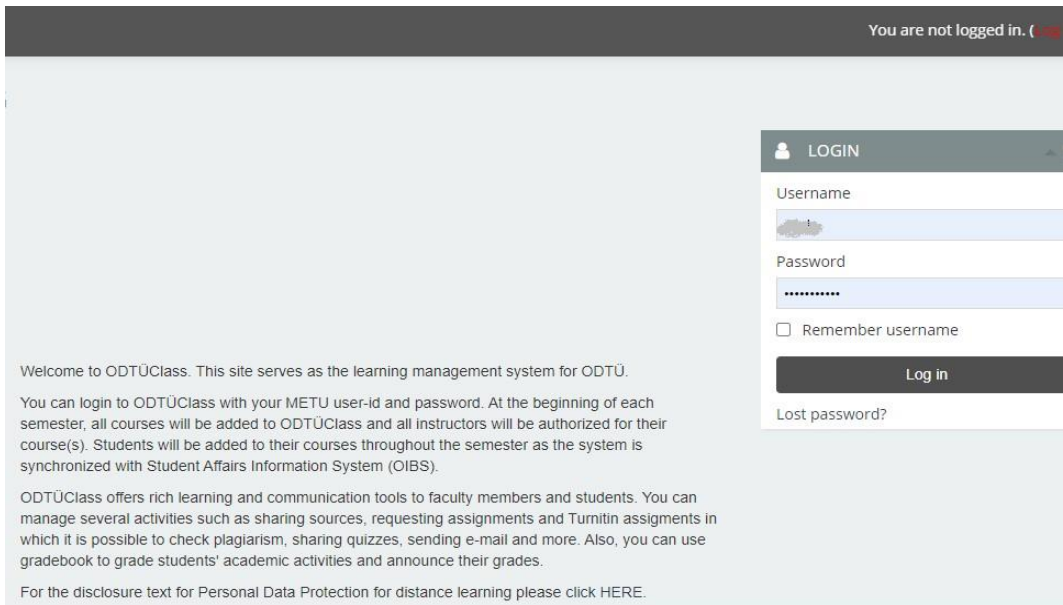




14. You may see a screen similar to the one below. Select Evet (Yes).



15. Log in by entering your user ID and password into the “log in” section in the upper right corner.



16. When the exam is over, click the quit button in the lower right corner of the window to exit SEB.

